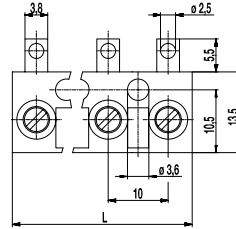
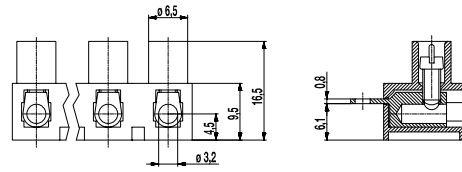
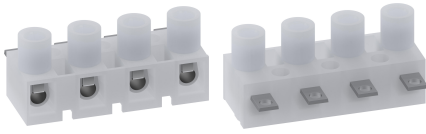


321-LFS(-DS)

Screw/solder terminal strip

Screw/solder tag connection, side of solder tag closed



GENERAL INFORMATION

Pitch	10 mm
No. of poles	1 - 12

TECHNICAL DATA

Clamping Range	<i>solid / stranded / AWG</i>		
<i>without wire protector</i>	0,75 - 6 mm ² / 0,75 - 4 mm ² / 18 - 12 AWG		
<i>with wire protector</i>	0,5 - 4 mm ² / 0,5 - 2,5 mm ² / 20 - 12 AWG		
Rated Cross Section	2,5 mm ²		
Wire Stripping Length	7 mm ± 0,5 mm		
Overvoltage Category	III	III	II
Pollution Severity Level	3	2	2
Rated Voltage	400 V	630 V	1000 V
Rated Impulse Voltage	6 kV	6 kV	6 kV
Rated Insulation Voltage	450 V acc. to EN 60998-1		
Rated Current	26 A		
Torque	0,5 Nm		

APPROVALS

	Current [A]	Voltage [V]	Group	AWG	[Nm]
	20	300	B	26-10 [1]	0,51
	10	300	D,E	26-10 [1]	0,51

MATERIAL

Moulding	PA, natural, V-2
Comparative Tracking Index	CTI ≥ 600
Insulating Group	I
Temperature Range	-40°C up to 100°C
Terminal body	Tin plated brass
Screw	M3; zinc plated steel, blue passivated
Wire protector	Tin plated tin bronze

OPTIONS / ACCESSORIES

- Marking options on the screw guides
- Cover caps A-323 und base plate B-323 for additional contact protection
- Insulation receptacles ISO-110
- Moulding made of special polyamide for e.g. household appliances
- Up to 16 poles possible

[1] for 321-LFS-DS: 26-12 AWG

CONFIGURATIONS

Version	Poles	Item	Article number	Item	Article number	Length (L)	PU
Standard	1	321-LFS/01	11.821.020	321-LFS-DS/01	31.821.020	8,00 mm	3000
Standard	2	321-LFS/02	12.821.020	321-LFS-DS/02	32.821.020	18,00 mm	1000
Standard	3	321-LFS/03	13.821.020	321-LFS-DS/03	33.821.020	28,00 mm	200
Standard	4	321-LFS/04	14.821.020	321-LFS-DS/04	34.821.020	38,00 mm	200
Standard	5	321-LFS/05	15.821.020	321-LFS-DS/05	35.821.020	48,00 mm	100
Standard	6	321-LFS/06	16.821.020	321-LFS-DS/06	36.821.020	58,00 mm	100
Standard	7	321-LFS/07	17.821.020	321-LFS-DS/07	37.821.020	68,00 mm	70
Standard	8	321-LFS/08	18.821.020	321-LFS-DS/08	38.821.020	78,00 mm	70
Standard	9	321-LFS/09	19.821.020	321-LFS-DS/09	39.821.020	88,00 mm	60
Standard	10	321-LFS/10	20.821.020	321-LFS-DS/10	40.821.020	98,00 mm	50
Standard	11	321-LFS/11	21.821.020	321-LFS-DS/11	41.821.020	108,00 mm	50
Standard	12	321-LFS/12	22.821.020	321-LFS-DS/12	42.821.020	117,00 mm	50

